



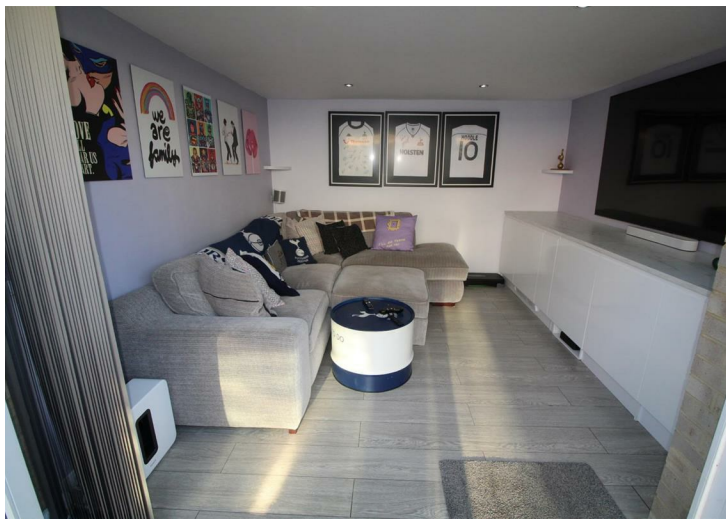
## 15 Harcourt Close, Egham, TW20 8BJ

This 3 bedroom house is situated in a small cul-de-sac within a short walk to the Pooley Green shops and the local schools. The accommodation is well laid out with a modern fitted kitchen and an excellent size lounge/dining room with new flooring and full width windows/sliding doors onto the superb south facing rear garden, ideal for entertaining, with an amazing office/TV room at the bottom of the garden with integrated fridge, freezer, work top and space for a large wall mounted TV. Upstairs are the three bedrooms and modern bathroom. There is gas central heating to radiators, double glazed windows and block-paved front garden, ready for off street parking (subject to the curb being dropped). EPC Rating: D.

EPC Rating

Council Tax Band

Freehold



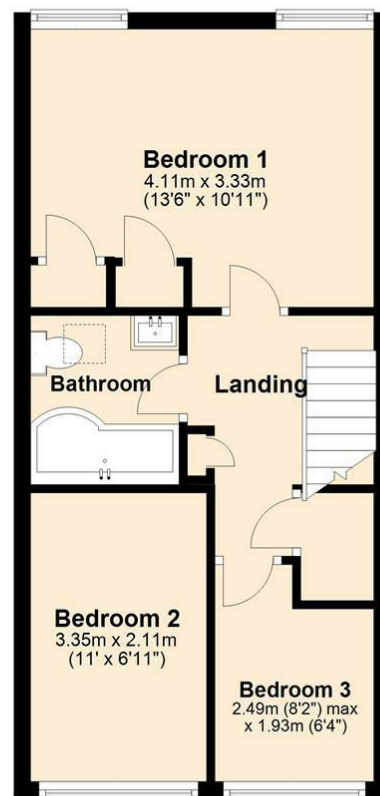
### Ground Floor

Approx. 49.3 sq. metres (530.8 sq. feet)



### First Floor

Approx. 36.7 sq. metres (394.6 sq. feet)



For more information or to view this property contact:

Aspen Estate Agents, St Judes Road, Englefield Green, TW20 0BY

Call 01784 433696

Email [info@aspenestateagents.co.uk](mailto:info@aspenestateagents.co.uk)

[www.aspenestateagents.co.uk](http://www.aspenestateagents.co.uk)